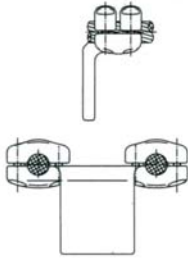


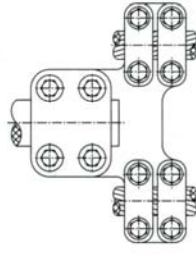
MRDP

Pag. R1



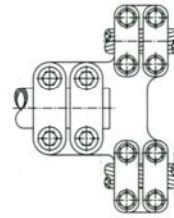
MLDP

Pag. R2



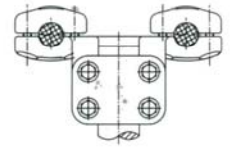
MRDBT.*

Pag. R3



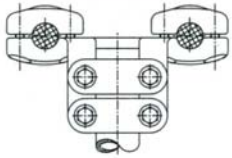
MRDB.*

Pag. R4



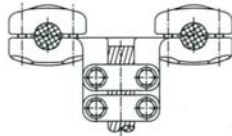
MLDBT

Pag. R5



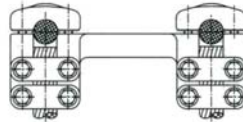
MLDB

Pag. R6



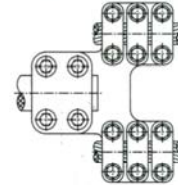
MLDC

Pag. R7



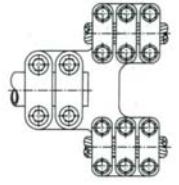
MLDDC

Pag. R8



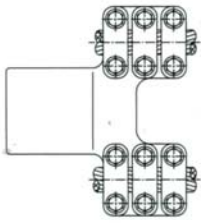
MRD3BT

Pag. R9



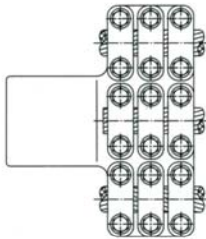
MRD3B

Pag. R9



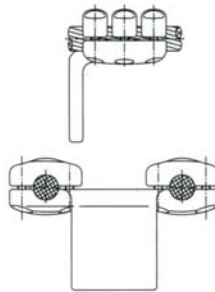
MRD3P

Pag. R10



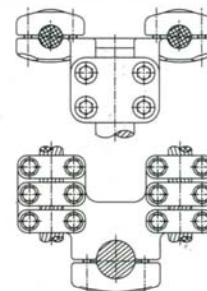
MR3C3P

Pag. R10



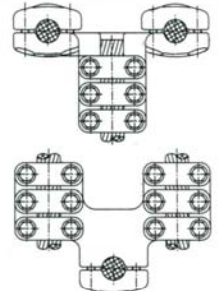
MLD3P

Pag. R11



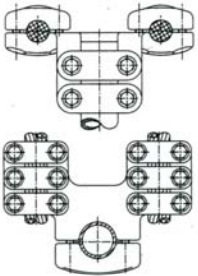
MLD3BT

Pag. R11



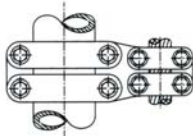
MLD3C

Pag. R12



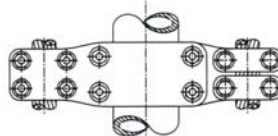
MLD3B

Pag. R13



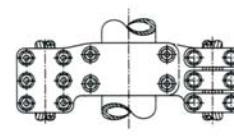
MUBC

Pag. R14



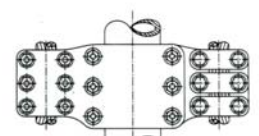
MUDB

Pag. R15



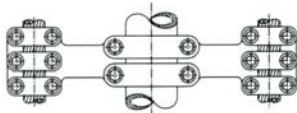
MUD3B

Pag. R15



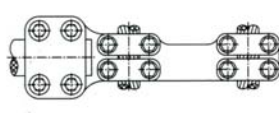
MUD3B3

Pag. R16



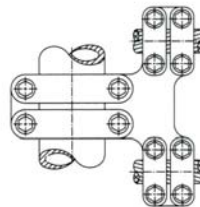
MLCP

Pag. R16



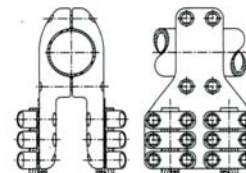
MDDBT.*

Pag. R17



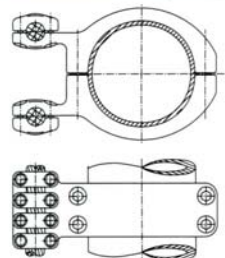
MDTBD.*

Pag. R17



MTD2B3.1

Pag. 18



MUD4B.2

Pag. 18



R

DUPLEX CONNECTORS

СДВОЕННЫЕ ЗАЖИМЫ

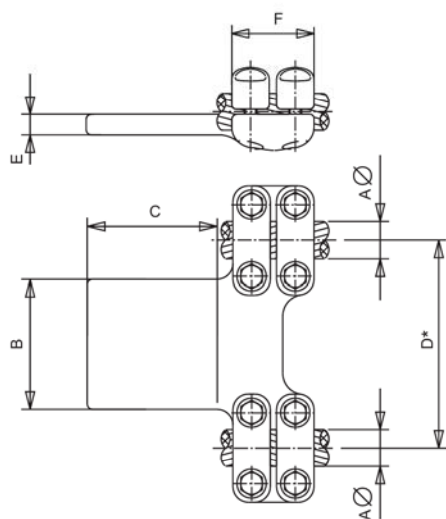
RACCORDS DUPLEX



STRAIGHT CONNECTOR DUPLEX CABLE TO FLATBAR

ПРЯМОЙ ЗАЖИМ ДЛЯ ПРИСОЕДИНЕНИЯ СДВОЕННОГО

ПРОВОДА К АППАРАТАМ



MRDP

NOTA

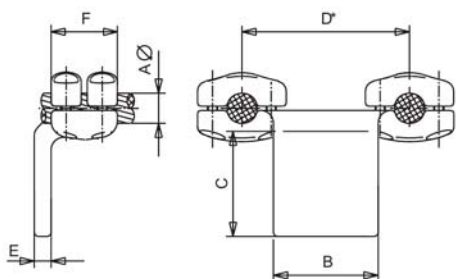
- D* • 1 = 100mm.
 • 15 = 150mm.
 • 2 = 200mm.
 • 3 = 300mm.
 • 33 = 330mm.
 • 4 = 400mm.
 • 45 = 450mm.

Referencia Code Шифр	mm.						Par de apriete Tightening torque Момент затяжки (kg.m)	
	A∅		B	C	D*	E		F
	Mín.	Máx.						
MRDP*-2255	20	22	80	80	SEGUN NOTA	15	85	3
MRDP*-2266	20	22	100	100		15	85	3
MRDP*-2288	20	22	125	125		15	85	3
MRDP*-22106	20	22	200	100		15	85	3
MRDP*-2555	24	26	80	80		15	85	3
MRDP*-2566	24	26	100	100		15	85	3
MRDP*-2588	24	26	125	125		15	85	3
MRDP*-25106	24	26	200	100		15	85	3
MRDP*-3055	28	30	80	80		15	85	3
MRDP*-3066	28	30	100	100		15	85	3
MRDP*-3088	28	30	125	125		15	85	3
MRDP*-30106	28	30	200	100		15	85	3
MRDP*-3255	31	32	80	80		15	90	5
MRDP*-3266	31	32	100	100		15	90	5
MRDP*-3288	31	32	125	125		15	90	5
MRDP*-32106	31	32	200	100		15	90	5
MRDP*-3555	33	35	80	80		15	90	5
MRDP*-3566	33	35	100	100		15	90	5
MRDP*-3588	33	35	125	125		15	90	5
MRDP*-35106	33	35	200	100		15	90	5
MRDP*-3855	36	38	80	80		15	90	5
MRDP*-3866	36	38	100	100		15	90	5
MRDP*-3888	36	38	125	125		15	90	5
MRDP*-38106	36	38	200	100		15	90	5
MRDP*-4355	40	43	80	80		15	90	5
MRDP*-4366	40	43	100	100		15	90	5
MRDP*-4388	40	43	125	125		15	90	5
MRDP*-43106	40	43	200	100		15	90	5



L CONNECTOR DUPLEX CABLE TO FLATBAR

L-ОБРАЗНЫЙ ЗАЖИМ ДЛЯ ПРИСОЕДИНЕНИЯ СДВОЕННОГО ПРОВОДА К АППАРАТАМ



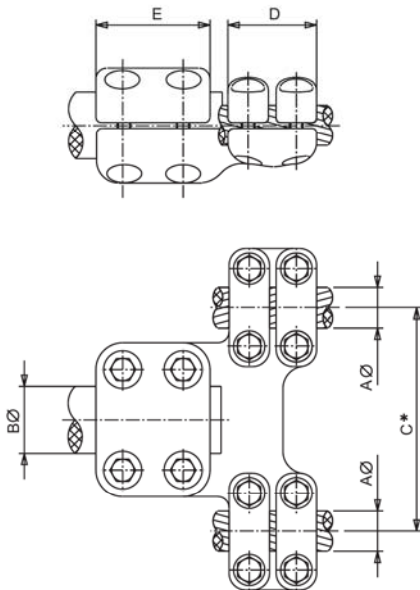
MLDP

NOTA

- D*
- 1 = 100mm.
 - 15 = 150mm.
 - 2 = 200mm.
 - 3 = 300mm.
 - 33 = 330mm.
 - 4 = 400mm.
 - 45 = 450mm.

Referencia Code Шифр	mm.						Par de apriete Tightening torque Момент затяжки (kg.m)	
	Aø		B	C	D*	E		F
	Mín.	Máx.						
MLDP*-2255	20	22	80	80	SEGUN NOTA	15	85	3
MLDP*-2266	20	22	100	100		15	85	3
MLDP*-2288	20	22	125	125		15	85	3
MLDP*-22106	20	22	200	100		15	85	3
MLDP*-2555	24	26	80	80		15	85	3
MLDP*-2566	24	26	100	100		15	85	3
MLDP*-2588	24	26	125	125		15	85	3
MLDP*-25106	24	26	200	100		15	85	3
MLDP*-3055	28	30	80	80		15	85	3
MLDP*-3066	28	30	100	100		15	85	3
MLDP*-3088	28	30	125	125		15	85	3
MLDP*-30106	28	30	200	100		15	85	3
MLDP*-3255	31	32	80	80		15	90	5
MLDP*-3266	31	32	100	100		15	90	5
MLDP*-3288	31	32	125	125		15	90	5
MLDP*-32106	31	32	200	100		15	90	5
MLDP*-3555	33	35	80	80		15	90	5
MLDP*-3566	33	35	100	100		15	90	5
MLDP*-3588	33	35	125	125		15	90	5
MLDP*-35106	33	35	200	100		15	90	5
MLDP*-3855	36	38	80	80		15	90	5
MLDP*-3866	36	38	100	100		15	90	5
MLDP*-3888	36	38	125	125		15	90	5
MLDP*-38106	36	38	200	100		15	90	5
MLDP*-4355	40	43	80	80		15	90	5
MLDP*-4366	40	43	100	100		15	90	5
MLDP*-4388	40	43	125	125		15	90	5
MLDP*-43106	40	43	200	100		15	90	5





MRDBT.*

NOTA

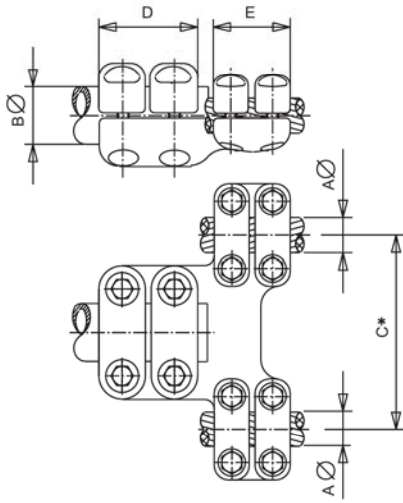
C*

- 1 = 100mm.
- 15 = 150mm.
- 2 = 200mm.
- 3 = 300mm.
- 33 = 330mm.
- 4 = 400mm.
- 45 = 450mm.

Referencia Code Шифр	mm.					Par de apriete Tightening torque Момент затяжки (kg.m)		
	Aø		Bø	C*	D	E	A	B
	Mín.	Máx.						
MRDBT.*-2230	20	22	30	SEGUN NOTA	85	85	3	3
MRDBT.*-2530	24	26	30		85	85	3	3
MRDBT.*-3030	28	30	30		85	85	3	3
MRDBT.*-3230	31	32	30		85	90	5	5
MRDBT.*-3530	33	35	30		85	90	5	5
MRDBT.*-3830	36	38	30		85	90	5	5
MRDBT.*-4330	40	43	30		85	90	5	5
MRDBT.*-2240	20	22	40		85	85	3	5
MRDBT.*-2540	24	26	40		85	85	3	5
MRDBT.*-3040	28	30	40		85	85	3	5
MRDBT.*-3240	31	32	40		85	90	3	5
MRDBT.*-3540	33	35	40		85	90	3	5
MRDBT.*-3840	36	38	40		85	90	3	5
MRDBT.*-4340	40	43	40		85	90	5	5
MRDBT.*-2250	20	22	50		100	85	3	5
MRDBT.*-2550	24	26	50		100	85	3	5
MRDBT.*-3050	28	30	50		100	85	3	5
MRDBT.*-3250	31	32	50		100	90	5	5
MRDBT.*-3550	33	35	50		100	90	5	5
MRDBT.*-3850	36	38	50		100	90	5	5
MRDBT.*-4350	40	43	50		100	90	5	5
MRDBT.*-2260	20	22	60		100	85	3	5
MRDBT.*-2560	24	26	60		100	85	3	5
MRDBT.*-3060	28	30	60		100	85	3	5
MRDBT.*-3260	31	32	60		100	90	5	5
MRDBT.*-3560	33	35	60		100	90	5	5
MRDBT.*-3860	36	38	60		100	90	5	5
MRDBT.*-4360	40	43	60		100	90	5	5

STRAIGHT CONNECTOR UNION DUPLEX CABLE TO TUBE

ПРЯМОЙ ЗАЖИМ ДЛЯ СОЕДИНЕНИЯ СДВОЕННОГО ПРОВОДА С ТРУБОЙ



MRDB.*

NOTA

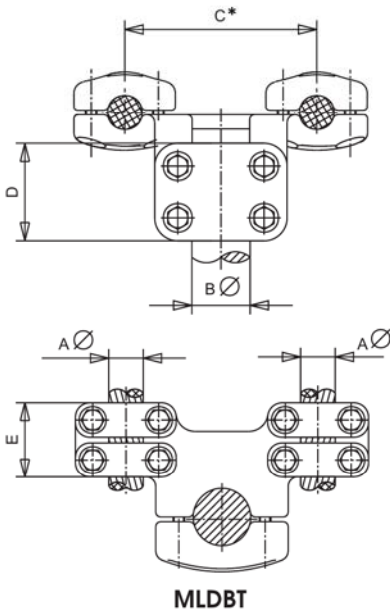
- C*
- 1 = 100mm.
 - 15 = 150mm.
 - 2 = 200mm.
 - 3 = 300mm.
 - 33 = 330mm.
 - 4 = 400mm.
 - 45 = 450mm.

Referencia Code Шифр	mm.					Par de apriete Tightening torque Момент затяжки (kg.m)		
	Aø		Bø	C*	D	E	A	B
	Mín.	Máx.						
MRDB.*-2230	20	22	30	SEGUN NOTA	85	85	3	3
MRDB.*-2530	24	26	30		85	85	3	3
MRDB.*-3030	28	30	30		85	85	3	3
MRDB.*-3230	31	32	30		85	90	5	5
MRDB.*-3530	33	35	30		85	90	5	5
MRDB.*-3830	36	38	30		85	90	5	5
MRDB.*-4330	40	43	30		85	90	5	5
MRDB.*-2240	20	22	40		85	85	3	5
MRDB.*-2540	24	26	40		85	85	3	5
MRDB.*-3040	28	30	40		85	85	3	5
MRDB.*-3240	31	32	40		85	90	3	5
MRDB.*-3540	33	35	40		85	90	3	5
MRDB.*-3840	36	38	40		85	90	3	5
MRDB.*-4340	40	43	40		85	90	5	5
MRDB.*-2250	20	22	50		100	85	3	5
MRDB.*-2550	24	26	50		100	85	3	5
MRDB.*-3050	28	30	50		100	85	3	5
MRDB.*-3250	31	32	50		100	90	5	5
MRDB.*-3550	33	35	50		100	90	5	5
MRDB.*-3850	36	38	50		100	90	5	5
MRDB.*-4350	40	43	50		100	90	5	5
MRDB.*-2260	20	22	60		100	85	3	5
MRDB.*-2560	24	26	60		100	85	3	5
MRDB.*-3060	28	30	60		100	85	3	5
MRDB.*-3260	31	32	60		100	90	5	5
MRDB.*-3560	33	35	60		100	90	5	5
MRDB.*-3860	36	38	60		100	90	5	5
MRDB.*-4360	40	43	60		100	90	5	5



L CONNECTOR DUPLEX CABLES TO STUD

L-ОБРАЗНЫЙ ЗАЖИМ ДЛЯ ПРИСОЕДИНЕНИЯ СТЕРЖНЯ СО
СДВОЕННЫМ ПРОВОДОМ



NOTA

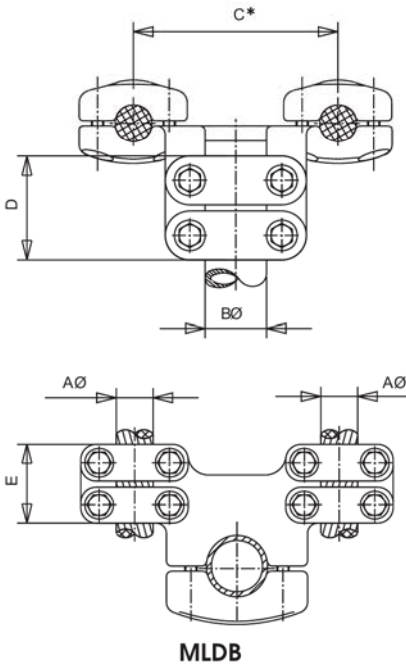
- C*
- 1 = 100mm.
 - 15 = 150mm.
 - 2 = 200mm.
 - 3 = 300mm.
 - 33 = 330mm.
 - 4 = 400mm.
 - 45 = 450mm.

Referencia Code Шифр	mm.					Par de apriete Tightening torque Момент затяжки (kg.m)		
	Aø		Bø	C*	D	E	A	B
	Mín.	Máx.						
MLDBT*-2230	20	22	30	SEGUN NOTA	85	85	3	3
MLDBT*-2530	24	26	30		85	85	3	3
MLDBT*-3030	28	30	30		85	85	3	3
MLDBT*-3230	31	32	30		85	90	5	5
MLDBT*-3530	33	35	30		85	90	5	5
MLDBT*-3830	36	38	30		85	90	5	5
MLDBT*-4330	40	43	30		85	90	5	5
MLDBT*-2240	20	22	40		85	85	3	5
MLDBT*-2540	24	26	40		85	85	3	5
MLDBT*-3040	28	30	40		85	85	3	5
MLDBT*-3240	31	32	40		85	90	3	5
MLDBT*-3540	33	35	40		85	90	3	5
MLDBT*-3840	36	38	40		85	90	3	5
MLDBT*-4340	40	43	40		85	90	5	5
MLDBT*-2250	20	22	50		100	85	3	5
MLDBT*-2550	24	26	50		100	85	3	5
MLDBT*-3050	28	30	50		100	85	3	5
MLDBT*-3250	31	32	50		100	90	5	5
MLDBT*-3550	33	35	50		100	90	5	5
MLDBT*-3850	36	38	50		100	90	5	5
MLDBT*-4350	40	43	50		100	90	5	5
MLDBT*-2260	20	22	60		100	85	3	5
MLDBT*-2560	24	26	60		100	85	3	5
MLDBT*-3060	28	30	60		100	85	3	5
MLDBT*-3260	31	32	60		100	90	5	5
MLDBT*-3560	33	35	60		100	90	5	5
MLDBT*-3860	36	38	60		100	90	5	5
MLDBT*-4360	40	43	60		100	90	5	5



L CONNECTOR DUPLEX CABLES TO TUBE

L-ОБРАЗНЫЙ ЗАЖИМ ДЛЯ ПРИСОЕДИНЕНИЯ ТРУБЫ К СДВОЕННОМУ ПРОВОДУ

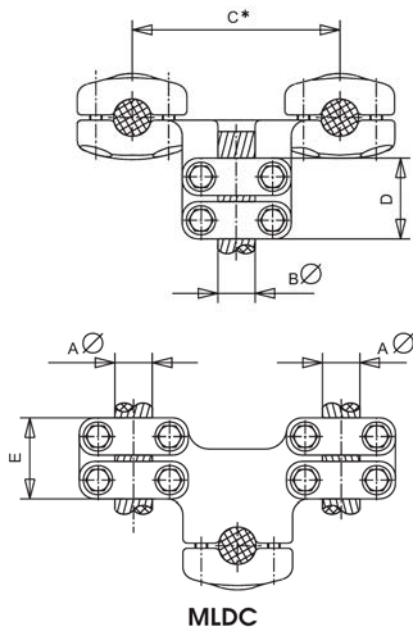


NOTA

- C***
- 1 = 100mm.
 - 15 = 150mm.
 - 2 = 200mm.
 - 3 = 300mm.
 - 33 = 330mm.
 - 4 = 400mm.
 - 45 = 450mm.

Referencia Code Шифр	mm.					Par de apriete Tightening torque Момент затяжки (kg.m)		
	Aø		Bø	C*	D	E	A	B
	Mín.	Máx.						
MLDB.*-2230	20	22	30	SEGUN NOTA	85	85	3	3
MLDB.*-2530	24	26	30		85	85	3	3
MLDB.*-3030	28	30	30		85	85	3	3
MLDB.*-3230	31	32	30		85	90	5	5
MLDB.*-3530	33	35	30		85	90	5	5
MLDB.*-3830	36	38	30		85	90	5	5
MLDB.*-4330	40	43	30		85	90	5	5
MLDB.*-2240	20	22	40		85	85	3	5
MLDB.*-2540	24	26	40		85	85	3	5
MLDB.*-3040	28	30	40		85	85	3	5
MLDB.*-3240	31	32	40		85	90	3	5
MLDB.*-3540	33	35	40		85	90	3	5
MLDB.*-3840	36	38	40		85	90	3	5
MLDB.*-4340	40	43	40		85	90	5	5
MLDB.*-2250	20	22	50		100	85	3	5
MLDB.*-2550	24	26	50		100	85	3	5
MLDB.*-3050	28	30	50		100	85	3	5
MLDB.*-3250	31	32	50		100	90	5	5
MLDB.*-3550	33	35	50		100	90	5	5
MLDB.*-3850	36	38	50		100	90	5	5
MLDB.*-4350	40	43	50		100	90	5	5
MLDB.*-2260	20	22	60		100	85	3	5
MLDB.*-2560	24	26	60		100	85	3	5
MLDB.*-3060	28	30	60		100	85	3	5
MLDB.*-3260	31	32	60		100	90	5	5
MLDB.*-3560	33	35	60		100	90	5	5
MLDB.*-3860	36	38	60		100	90	5	5
MLDB.*-4360	40	43	60		100	90	5	5





NOTA

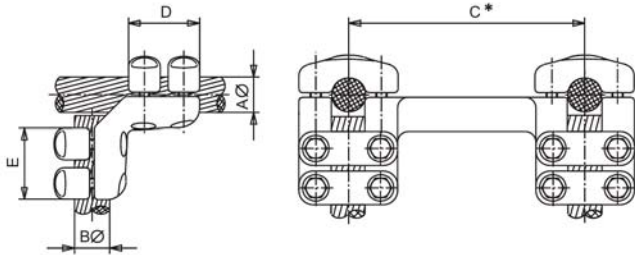
- C***
- 1 = 100mm.
 - 15 = 150mm.
 - 2 = 200mm.
 - 3 = 300mm.
 - 33 = 330mm.
 - 4 = 400mm.
 - 45 = 450mm.

Referencia Code Шифр	mm.					C*	D	E	Par de apriete Tightening torque Момент затяжки (kg.m)	
	Aø		Bø		A				B	
	Mín.	Máx.	Mín.	Máx.						
MLDC.*2222	20	22	20	22	SEGUN NOTA	85	85	3	3	
MLDC.*2225	20	22	24	26		85	85	3	3	
MLDC.*2230	20	22	28	30		85	85	3	3	
MLDC.*2522	24	26	20	22		85	85	3	3	
MLDC.*2525	24	26	24	26		85	85	3	3	
MLDC.*2530	24	26	28	30		85	85	3	3	
MLDC.*3022	28	30	20	22		85	85	3	3	
MLDC.*3025	28	30	24	26		85	85	3	3	
MLDC.*3030	28	30	28	30		85	85	3	3	
MLDC.*3032	28	30	31	32		90	85	3	5	
MLDC.*3035	28	30	33	35		90	85	3	5	
MLDC.*3038	28	30	36	38		90	85	3	5	
MLDC.*3043	28	30	40	43		90	85	3	5	
MLDC.*3222	31	32	20	22		85	90	5	3	
MLDC.*3225	31	32	24	26		85	90	5	3	
MLDC.*3230	31	32	28	30		85	90	5	3	
MLDC.*3232	31	32	31	32		90	90	5	5	
MLDC.*3235	31	32	33	35		90	90	5	5	
MLDC.*3238	31	32	36	38		90	90	5	5	
MLDC.*3243	31	32	40	43		90	90	5	5	
MLDC.*3522	33	35	20	22		85	90	5	3	
MLDC.*3525	33	35	24	26		85	90	5	3	
MLDC.*3530	33	35	28	30		85	90	5	3	
MLDC.*3532	33	35	31	32		90	90	5	5	
MLDC.*3535	33	35	33	35		90	90	5	5	
MLDC.*3538	33	35	36	38		90	90	5	5	
MLDC.*3543	33	35	40	43		90	90	5	5	
MLDC.*3822	36	38	20	22		85	90	5	3	
MLDC.*3825	36	38	24	26		85	90	5	3	
MLDC.*3830	36	38	28	30		85	90	5	3	
MLDC.*3832	36	38	31	32		90	90	5	5	
MLDC.*3835	36	38	33	35		90	90	5	5	
MLDC.*3838	36	38	36	38		90	90	5	5	
MLDC.*3843	36	38	40	43		90	90	5	5	
MLDC.*4330	40	43	28	30		85	90	5	3	
MLDC.*4332	40	43	31	32		90	90	5	5	
MLDC.*4335	40	43	33	35		90	90	5	5	
MLDC.*4338	40	43	36	38		90	90	5	5	
MLDC.*4343	40	43	40	43		90	90	5	5	



L CONNECTOR DUPLEX CABLE TO DUPLEX CABLE

L-ОБРАЗНЫЙ ЗАЖИМ ДЛЯ СОЕДИНЕНИЯ СДВОЕННЫХ ПРОВОДОВ



MLDDC

NOTA

C*

- 1 = 100mm.
- 15 = 150mm.
- 2 = 200mm.
- 3 = 300mm.
- 33 = 330mm.
- 4 = 400mm.
- 45 = 450mm.

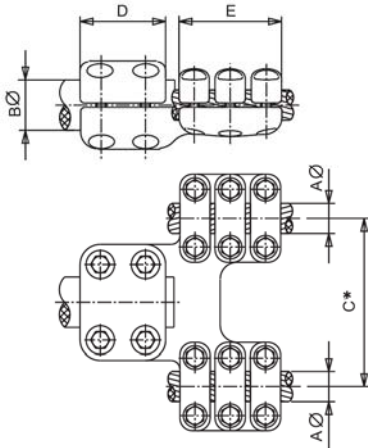
Referencia Code Шифр	mm.					Par de apriete Tightening torque Момент затяжки (kg.m)		A		B	
	Aø		Bø		C*						
	Mín.	Máx.	Mín.	Máx.		A	B				
MLDDC.*2222	20	22	20	22	SEGUN NOTA	85	85	3	3		
MLDDC.*2225	20	22	24	26		85	85	3	3		
MLDDC.*2230	20	22	28	30		85	85	3	3		
MLDDC.*2522	24	26	20	22		85	85	3	3		
MLDDC.*2525	24	26	24	26		85	85	3	3		
MLDDC.*2530	24	26	28	30		85	85	3	3		
MLDDC.*3022	28	30	20	22		85	85	3	3		
MLDDC.*3025	28	30	24	26		85	85	3	3		
MLDDC.*3030	28	30	28	30		85	85	3	3		
MLDDC.*3230	31	32	28	30		85	90	5	3		
MLDDC.*3232	31	32	31	32		90	90	5	5		
MLDDC.*3235	31	32	33	35		90	90	5	5		
MLDDC.*3238	31	32	36	38		90	90	5	5		
MLDDC.*3243	31	32	40	43		90	90	5	5		
MLDDC.*3530	33	35	28	30		85	90	5	3		
MLDDC.*3532	33	35	31	32		90	90	5	5		
MLDDC.*3535	33	35	33	35		90	90	5	5		
MLDDC.*3538	33	35	36	38		90	90	5	5		
MLDDC.*3543	33	35	40	43		90	90	5	5		
MLDDC.*3830	36	38	28	30		85	90	5	3		
MLDDC.*3832	36	38	31	32		90	90	5	5		
MLDDC.*3835	36	38	33	35		90	90	5	5		
MLDDC.*3838	36	38	36	38		90	90	5	5		
MLDDC.*3843	36	38	40	43		90	90	5	5		
MLDDC.*4330	40	43	28	30		85	90	5	3		
MLDDC.*4332	40	43	31	32		90	90	5	5		
MLDDC.*4335	40	43	33	35		90	90	5	5		
MLDDC.*4338	40	43	36	38		90	90	5	5		
MLDDC.*4343	40	43	40	43		90	90	5	5		



STRAIGHT CONNECTOR DUPLEX CABLE TO STUD

ПРЯМОЙ ЗАЖИМ ДЛЯ ПРИСОЕДИНЕНИЯ СТЕРЖНЯ К

СДВОЕННОМУ ПРОВОДУ



MRD3BT

NOTA

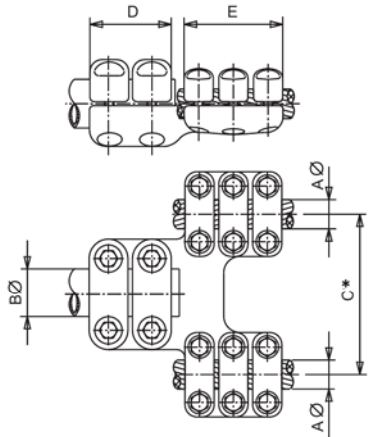
- C***
- 1 = 100mm.
 - 15 = 150mm.
 - 2 = 200mm.
 - 3 = 300mm.
 - 33 = 330mm.
 - 4 = 400mm.
 - 45 = 450mm.

Referencia Code Шифр	mm.					Par de apriete Tightening torque Момент затяжки (kg.m)		
	Aø		Bø	C*	D	E	A	B
	Mín.	Máx.						
MRD3BT*-3030	28	30	30	SEGUN NOTA	85	138	5	5
MRD3BT*-3230	31	32	30		85	138	5	5
MRD3BT*-3530	33	35	30		85	138	5	5
MRD3BT*-3830	36	38	30		85	138	5	5
MRD3BT*-4330	40	43	30		85	138	5	5
MRD3BT*-3040	28	30	40		85	138	5	5
MRD3BT*-3240	31	32	40		85	138	5	5
MRD3BT*-3540	33	35	40		85	138	5	5
MRD3BT*-3840	36	38	40		85	138	5	5
MRD3BT*-4340	40	43	40		85	138	5	5
MRD3BT*-3050	28	30	50		100	138	5	5
MRD3BT*-3250	31	32	50		100	138	5	5
MRD3BT*-3550	33	35	50		100	138	5	5
MRD3BT*-3850	36	38	50		100	138	5	5
MRD3BT*-4350	40	43	50		100	138	5	5
MRD3BT*-3060	28	30	60		100	138	5	5
MRD3BT*-3260	31	32	60		100	138	5	5
MRD3BT*-3560	33	35	60		100	138	5	5
MRD3BT*-3860	36	38	60		100	138	5	5
MRD3BT*-4360	40	43	60		100	138	5	5

STRAIGHT CONNECTOR DUPLEX CABLE TO TUBE

ПРЯМОЙ ЗАЖИМ ДЛЯ ПРИСОЕДИНЕНИЯ ТРУБЫ К

СДВОЕННОМУ ПРОВОДУ



MRD3B

NOTA

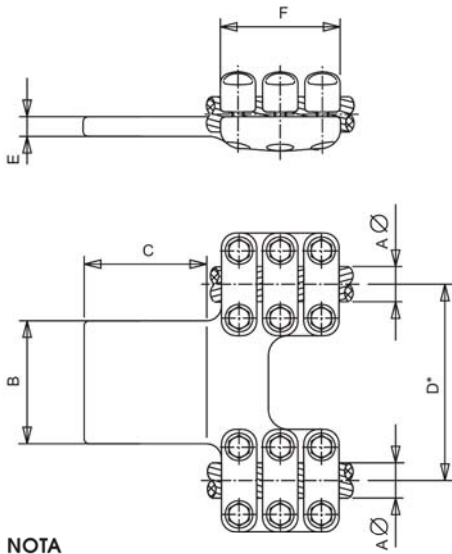
- C***
- 1 = 100mm.
 - 15 = 150mm.
 - 2 = 200mm.
 - 3 = 300mm.
 - 33 = 330mm.
 - 4 = 400mm.
 - 45 = 450mm.

Referencia Code Шифр	mm.					Par de apriete Tightening torque Момент затяжки (kg.m)		
	Aø		Bø	C*	D	E	A	B
	Mín.	Máx.						
MRD3B.*-3030	28	30	30	SEGUN NOTA	85	138	5	5
MRD3B.*-3230	31	32	30		85	138	5	5
MRD3B.*-3530	33	35	30		85	138	5	5
MRD3B.*-3830	36	38	30		85	138	5	5
MRD3B.*-4330	40	43	30		85	138	5	5
MRD3B.*-3040	28	30	40		85	138	5	5
MRD3B.*-3240	31	32	40		85	138	5	5
MRD3B.*-3540	33	35	40		85	138	5	5
MRD3B.*-3840	36	38	40		85	138	5	5
MRD3B.*-4340	40	43	40		85	138	5	5
MRD3B.*-3050	28	30	50		100	138	5	5
MRD3B.*-3250	31	32	50		100	138	5	5
MRD3B.*-3550	33	35	50		100	138	5	5
MRD3B.*-3850	36	38	50		100	138	5	5
MRD3B.*-4350	40	43	50		100	138	5	5
MRD3B.*-3060	28	30	60		100	138	5	5
MRD3B.*-3260	31	32	60		100	138	5	5
MRD3B.*-3560	33	35	60		100	138	5	5
MRD3B.*-3860	36	38	60		100	138	5	5
MRD3B.*-4360	40	43	60		100	138	5	5



STRAIGHT CONNECTOR DUPLEX CABLE TO FLATBAR

ПРЯМОЙ ЗАЖИМ ДЛЯ ПРИСОЕДИНЕНИЯ СДВОЕННОГО ПРОВОДА К АППАРАТАМ



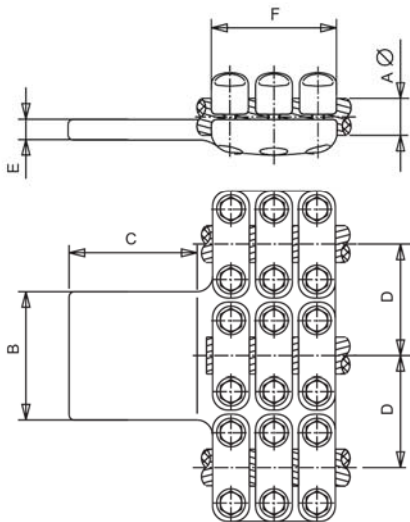
- NOTA**
- D***
- 1 = 100mm.
 - 15 = 150mm.
 - 2 = 200mm.
 - 3 = 300mm.
 - 33 = 330mm.
 - 4 = 400mm.
 - 45 = 450mm.

MRD3P

Referencia Code Шифр	m.m.							Par de apriete Tightening torque Момент затяжки (kg.m)
	A∅		B	C	D*	E	F	
	Mín.	Máx.						
MRD3P.*-3055	28	30	80	80	SEGUN NOTA	15	138	5
MRD3P.*-3066	28	30	100	100		15	138	5
MRD3P.*-3088	28	30	125	125		15	138	5
MRD3P.*-30106	28	30	200	100		15	138	5
MRD3P.*-3255	31	32	80	80		15	138	5
MRD3P.*-3266	31	32	100	100		15	138	5
MRD3P.*-3288	31	32	125	125		15	138	5
MRD3P.*-32106	31	32	200	100		15	138	5
MRD3P.*-3555	33	35	80	80		15	138	5
MRD3P.*-3566	33	35	100	100		15	138	5
MRD3P.*-3588	33	35	125	125		15	138	5
MRD3P.*-35106	33	35	200	100		15	138	5
MRD3P.*-3855	36	38	80	80		15	138	5
MRD3P.*-3866	36	38	100	100		15	138	5
MRD3P.*-3888	36	38	125	125		15	138	5
MRD3P.*-38106	36	38	200	100		15	138	5
MRD3P.*-4355	40	43	80	80		15	138	5
MRD3P.*-4366	40	43	100	100		15	138	5
MRD3P.*-4388	40	43	125	125		15	138	5
MRD3P.*-43106	40	43	200	100		15	138	5

STRAIGHT CONNECTOR TRIPLE CABLE TO FLATBAR

ПРЯМОЙ ЗАЖИМ ДЛЯ ПРИСОЕДИНЕНИЯ ТРОЙНОГО ПРОВОДА К АППАРАТАМ



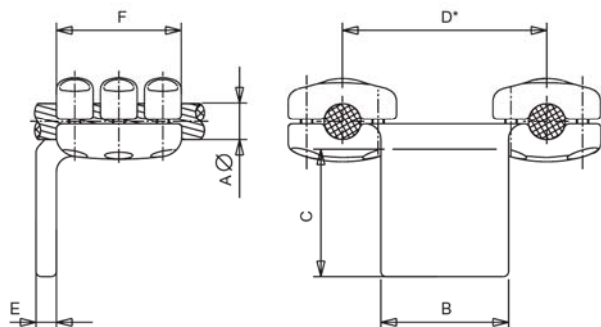
MR3C3P

Referencia Code Шифр	m.m.							Par de apriete Tightening torque Момент затяжки (kg.m)
	A∅		B	C	D	E	F	
	Mín.	Máx.						
MR3C3P.*-3055	28	30	80	80	110	15	138	5
MR3C3P.*-3066	28	30	100	100	110	15	138	5
MR3C3P.*-3088	28	30	125	125	110	15	138	5
MR3C3P.*-30106	28	30	200	100	110	15	138	5
MR3C3P.*-3255	31	32	80	80	110	15	138	5
MR3C3P.*-3266	31	32	100	100	110	15	138	5
MR3C3P.*-3288	31	32	125	125	110	15	138	5
MR3C3P.*-32106	31	32	200	100	110	15	138	5
MR3C3P.*-3555	33	35	80	80	110	15	138	5
MR3C3P.*-3566	33	35	100	100	110	15	138	5
MR3C3P.*-3588	33	35	125	125	110	15	138	5
MR3C3P.*-35106	33	35	200	100	110	15	138	5
MR3C3P.*-3855	36	38	80	80	110	15	138	5
MR3C3P.*-3866	36	38	100	100	110	15	138	5
MR3C3P.*-3888	36	38	125	125	110	15	138	5
MR3C3P.*-38106	36	38	200	100	110	15	138	5
MR3C3P.*-4355	40	43	80	80	110	15	138	5
MR3C3P.*-4366	40	43	100	100	110	15	138	5
MR3C3P.*-4388	40	43	125	125	110	15	138	5
MR3C3P.*-43106	40	43	200	100	110	15	138	5



L CONNECTOR DUPLEX CABLE TO FLATBAR

L-ОБРАЗНЫЙ ЗАЖИМ ДЛЯ ПРИСОЕДИНЕНИЯ ПРОВОДОВ К АППАРАТАМ



MLD3P

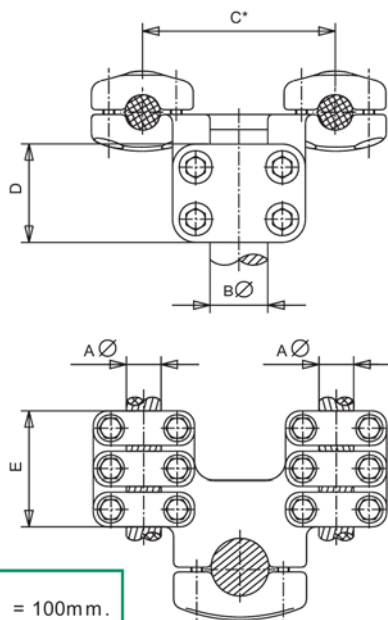
NOTA

- D***
- 1 = 100mm.
 - 15 = 150mm.
 - 2 = 200mm.
 - 3 = 300mm.
 - 33 = 330mm.
 - 4 = 400mm.
 - 45 = 450mm.

Referencia Code Шифр	mm.						Par de apriete Tightening torque Момент затяжки (kg.m)	
	Aø		B	C	D*	E		F
	Mín.	Máx.						
MLD3P*-3055	28	30	80	80	SEGUN NOTA	15	138	5
MLD3P*-3066	28	30	100	100		15	138	5
MLD3P*-3088	28	30	125	125		15	138	5
MLD3P*-30106	28	30	200	100		15	138	5
MLD3P*-3255	31	32	80	80		15	138	5
MLD3P*-3266	31	32	100	100		15	138	5
MLD3P*-3288	31	32	125	125		15	138	5
MLD3P*-32106	31	32	200	100		15	138	5
MLD3P*-3555	33	35	80	80		15	138	5
MLD3P*-3566	33	35	100	100		15	138	5
MLD3P*-3588	33	35	125	125		15	138	5
MLD3P*-35106	33	35	200	100		15	138	5
MLD3P*-3855	36	38	80	80		15	138	5
MLD3P*-3866	36	38	100	100		15	138	5
MLD3P*-3888	36	38	125	125		15	138	5
MLD3P*-38106	36	38	200	100		15	138	5
MLD3P*-4355	40	43	80	80		15	138	5
MLD3P*-4366	40	43	100	100		15	138	5
MLD3P*-4388	40	43	125	125		15	138	5
MLD3P*-43106	40	43	200	100		15	138	5

L CONNECTOR DUPLEX CABLE TO STUD

L-ОБРАЗНЫЙ ЗАЖИМ ДЛЯ ПРИСОЕДИНЕНИЯ СТЕРЖНЯ К АППАРАТАМ



MLD3BT

NOTA

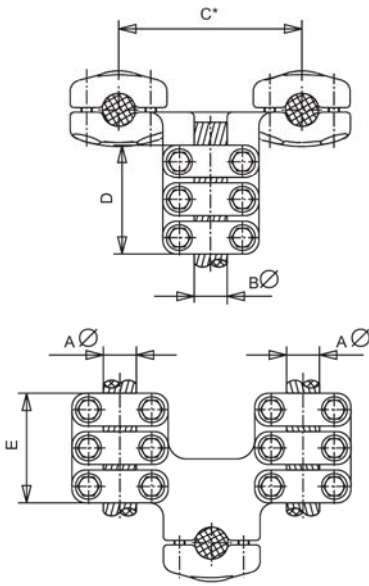
- C***
- 1 = 100mm.
 - 15 = 150mm.
 - 2 = 200mm.
 - 3 = 300mm.
 - 33 = 330mm.
 - 4 = 400mm.
 - 45 = 450mm.

Referencia Code Шифр	mm.						Par de apriete Tightening torque Момент затяжки (kg.m)	
	Aø		Bø	C*	D	E	A	B
	Mín.	Máx.						
MLD3BT*-3030	28	30	30	SEGUN NOTA	85	138	5	5
MLD3BT*-3230	31	32	30		85	138	5	5
MLD3BT*-3530	33	35	30		85	138	5	5
MLD3BT*-3830	36	38	30		85	138	5	5
MLD3BT*-4330	40	43	30		85	138	5	5
MLD3BT*-3040	28	30	40		85	138	5	5
MLD3BT*-3240	31	32	40		85	138	5	5
MLD3BT*-3540	33	35	40		85	138	5	5
MLD3BT*-3840	36	38	40		85	138	5	5
MLD3BT*-4340	40	43	40		85	138	5	5
MLD3BT*-3050	28	30	50		100	138	5	5
MLD3BT*-3250	31	32	50		100	138	5	5
MLD3BT*-3550	33	35	50		100	138	5	5
MLD3BT*-3850	36	38	50		100	138	5	5
MLD3BT*-4350	40	43	50		100	138	5	5
MLD3BT*-3060	28	30	60		100	138	5	5
MLD3BT*-3260	31	32	60		100	138	5	5
MLD3BT*-3560	33	35	60		100	138	5	5
MLD3BT*-3860	36	38	60		100	138	5	5
MLD3BT*-4360	40	43	60		100	138	5	5



L CONNECTOR DUPLEX CABLE TO CABLE

L-ОБРАЗНЫЙ ЗАЖИМ ДЛЯ СОЕДИНЕНИЯ ПРОВОДОВ



MLD3C

NOTA

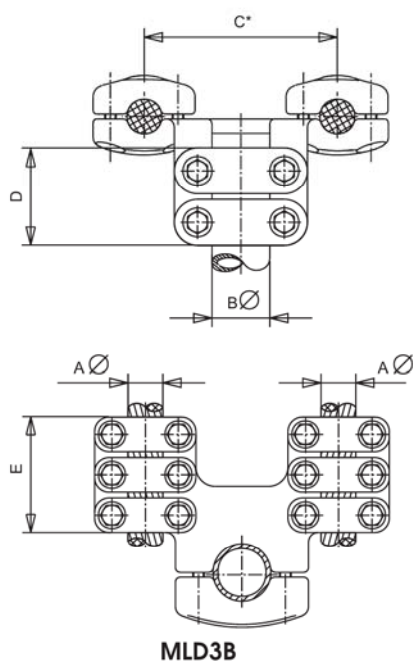
- C*
 • 1 = 100mm.
 • 15 = 150mm.
 • 2 = 200mm.
 • 3 = 300mm.
 • 33 = 330mm.
 • 4 = 400mm.
 • 45 = 450mm.

Referencia Code Шифр	mm.						Par de apriete Tightening torque Момент затяжки (kg.m)		
	A \varnothing		B \varnothing		C*	D	E	A	B
	Mín.	Máx.	Mín.	Máx.					
MLD3C.*3032	28	30	31	32	SEGUN NOTA	138	138	3	5
MLD3C.*3035	28	30	33	35		138	138	3	5
MLD3C.*3038	28	30	36	38		138	138	3	5
MLD3C.*3043	28	30	40	43		138	138	3	5
MLD3C.*3230	31	32	28	30		138	138	5	3
MLD3C.*3232	31	32	31	32		138	138	5	5
MLD3C.*3235	31	32	33	35		138	138	5	5
MLD3C.*3238	31	32	36	38		138	138	5	5
MLD3C.*3243	31	32	40	43		138	138	5	5
MLD3C.*3530	33	35	28	30		138	138	5	3
MLD3C.*3532	33	35	31	32		138	138	5	5
MLD3C.*3535	33	35	33	35		138	138	5	5
MLD3C.*3538	33	35	36	38		138	138	5	5
MLD3C.*3543	33	35	40	43		138	138	5	5
MLD3C.*3830	36	38	28	30		138	138	5	3
MLD3C.*3832	36	38	31	32		138	138	5	5
MLD3C.*3835	36	38	33	35		138	138	5	5
MLD3C.*3838	36	38	36	38		138	138	5	5
MLD3C.*3843	36	38	40	43		138	138	5	5
MLD3C.*4330	40	43	28	30		138	138	5	3
MLD3C.*4332	40	43	31	32		138	138	5	5
MLD3C.*4335	40	43	33	35		138	138	5	5
MLD3C.*4338	40	43	36	38		138	138	5	5
MLD3C.*4343	40	43	40	43		138	138	5	5



L CONNECTOR DUPLEX CABLE TO TUBE

L-ОБРАЗНЫЙ ЗАЖИМ ДЛЯ ПРИСОЕДИНЕНИЯ ТРУБЫ К СДВОЕНОМУ ПРОВОДУ

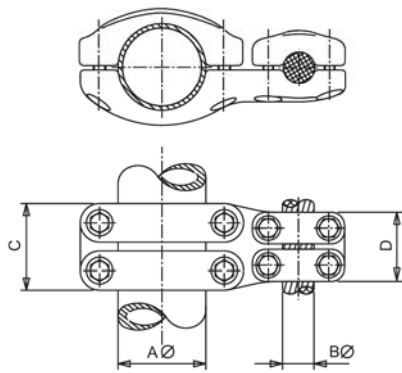


NOTA

- C***
- 1 = 100mm.
 - 15 = 150mm.
 - 2 = 200mm.
 - 3 = 300mm.
 - 33 = 330mm.
 - 4 = 400mm.
 - 45 = 450mm.

Referencia Code Шифр	mm.					Par de apriete Tightening torque Момент затяжки (kg.m)		
	A \varnothing		B \varnothing	C*	D	E	A	B
	Mín.	Máx.						
MLD3B.*-3030	28	30	30	SEGUN NOTA	85	138	5	5
MLD3B.*-3230	31	32	30		85	138	5	5
MLD3B.*-3530	33	35	30		85	138	5	5
MLD3B.*-3830	36	38	30		85	138	5	5
MLD3B.*-4330	40	43	30		85	138	5	5
MLD3B.*-3040	28	30	40		85	138	5	5
MLD3B.*-3240	31	32	40		85	138	5	5
MLD3B.*-3540	33	35	40		85	138	5	5
MLD3B.*-3840	36	38	40		85	138	5	5
MLD3B.*-4340	40	43	40		85	138	5	5
MLD3B.*-3050	28	30	50		100	138	5	5
MLD3B.*-3250	31	32	50		100	138	5	5
MLD3B.*-3550	33	35	50		100	138	5	5
MLD3B.*-3850	36	38	50		100	138	5	5
MLD3B.*-4350	40	43	50		100	138	5	5
MLD3B.*-3060	28	30	60		100	138	5	5
MLD3B.*-3260	31	32	60		100	138	5	5
MLD3B.*-3560	33	35	60		100	138	5	5
MLD3B.*-3860	36	38	60		100	138	5	5
MLD3B.*-4360	40	43	60		100	138	5	5



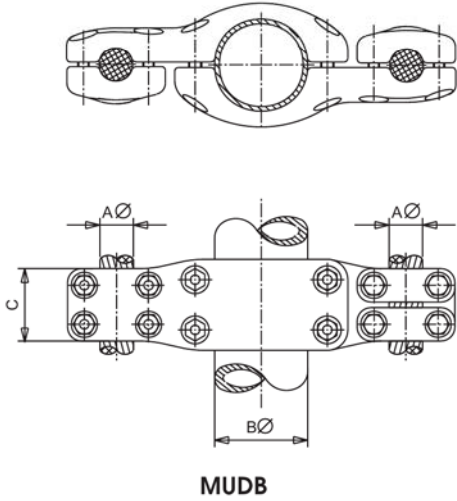


MUBC

Referencia Code Шифр	mm.				Par de apriete Tightening torque Момент затяжки (kg.m)		
	AØ	BØ		C	D	A	B
		Mín.	Máx.				
MUBC-5022	50	20	22	100	85	5	3
MUBC-5025	50	24	26	100	85	5	3
MUBC-5030	50	28	30	100	85	5	3
MUBC-5032	50	31	32	100	90	5	5
MUBC-5035	50	33	35	100	90	5	5
MUBC-5038	50	36	38	100	90	5	5
MUBC-5043	50	40	43	100	90	5	5
MUBC-6022	60	20	22	100	85	5	3
MUBC-6025	60	24	26	100	85	5	3
MUBC-6030	60	28	30	100	85	5	3
MUBC-6032	60	31	32	100	90	5	5
MUBC-6035	60	33	35	100	90	5	5
MUBC-6038	60	36	38	100	90	5	5
MUBC-6043	60	40	43	100	90	5	5
MUBC-8022	80	20	22	100	85	5	3
MUBC-8025	80	24	26	100	85	5	3
MUBC-8030	80	28	30	100	85	5	3
MUBC-8032	80	31	32	100	90	5	5
MUBC-8035	80	33	35	100	90	5	5
MUBC-8038	80	36	38	100	90	5	5
MUBC-8043	80	40	43	100	90	5	5
MUBC-10022	100	20	22	110	85	5	3
MUBC-10025	100	24	26	110	85	5	3
MUBC-10030	100	28	30	110	85	5	3
MUBC-10032	100	31	32	110	90	5	5
MUBC-10035	100	33	35	110	90	5	5
MUBC-10038	100	36	38	110	90	5	5
MUBC-10043	100	40	43	110	90	5	5
MUBC-12030	120	28	30	110	90	7	5
MUBC-12032	120	31	32	110	90	7	5
MUBC-12035	120	33	35	110	90	7	5
MUBC-12038	120	36	38	110	90	7	5
MUBC-12043	120	40	43	110	90	7	5
MUBC-15030	150	28	30	110	90	7	5
MUBC-15032	150	31	32	120	90	7	5
MUBC-15035	150	33	35	120	90	7	5
MUBC-15038	150	36	38	120	90	7	5
MUBC-15043	150	40	43	120	90	7	5

PARALLEL CONNECTOR UNION CABLE DUPLEX TO TUBE

ПАРАЛЛЕЛЬНЫЙ ЗАЖИМ ДЛЯ ПРИСОЕДИНЕНИЯ СДВОЕННОГО ПРОВОДА К ТРУБЕ

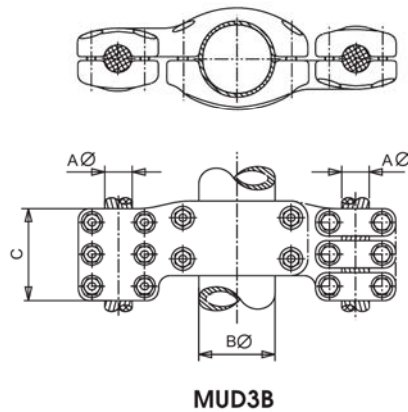


MUDB

Referencia Code Шифр	mm.			Par de apriete Tightening torque Момент затяжки (kg.m)		
	A \varnothing		B \varnothing	C	A	B
	Mín.	Máx.				
MUDB-22100	20	22	100	85	3	5
MUDB-25100	24	26	100	85	3	5
MUDB-30100	28	30	100	85	3	5
MUDB-32100	31	32	100	90	5	5
MUDB-35100	33	35	100	90	5	5
MUDB-38100	36	38	100	90	5	5
MUDB-43100	40	43	100	90	5	5
MUDB-22120	20	22	120	90	5	7
MUDB-25120	24	26	120	90	5	7
MUDB-30120	28	30	120	90	5	7
MUDB-32120	31	32	120	90	5	7
MUDB-35120	33	35	120	90	5	7
MUDB-38120	36	38	120	90	5	7
MUDB-43120	40	43	120	90	5	7
MUDB-30150	28	30	150	90	5	7
MUDB-32150	31	32	150	90	5	7
MUDB-35150	33	35	150	90	5	7
MUDB-38150	36	38	150	90	5	7
MUDB-43150	40	43	150	90	5	7

PARALLEL CONNECTOR UNION CABLE DUPLEX TO TUBE

ПАРАЛЛЕЛЬНЫЙ ЗАЖИМ ДЛЯ ПРИСОЕДИНЕНИЯ СДВОЕННОГО ПРОВОДА К ТРУБЕ



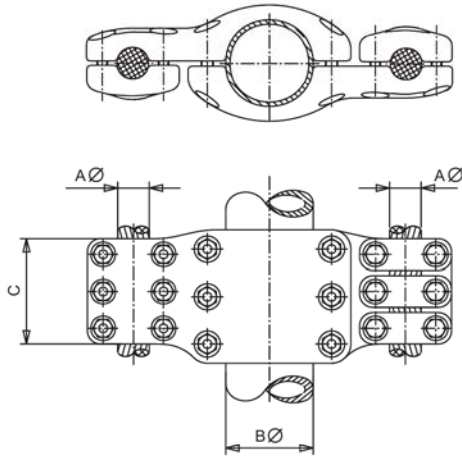
MUD3B

Referencia Code Шифр	mm.			Par de apriete Tightening torque Момент затяжки (kg.m)		
	A \varnothing		B \varnothing	C	A	B
	Mín.	Máx.				
MUD3B-30100	28	30	100	138	5	5
MUD3B-32100	31	32	100	138	5	5
MUD3B-35100	33	35	100	138	5	5
MUD3B-38100	36	38	100	138	5	5
MUD3B-43100	40	43	100	138	5	5
MUD3B-22120	20	22	120	138	5	7
MUD3B-25120	24	26	120	138	5	7
MUD3B-30120	28	30	120	138	5	7
MUD3B-32120	31	32	120	138	5	7
MUD3B-35120	33	35	120	138	5	7
MUD3B-38120	36	38	120	138	5	7
MUD3B-43120	40	43	120	138	5	7
MUD3B-30150	28	30	150	138	5	7
MUD3B-32150	31	32	150	138	5	7
MUD3B-35150	33	35	150	138	5	7
MUD3B-38150	36	38	150	138	5	7
MUD3B-43150	40	43	150	138	5	7



PARALLEL CONNECTOR UNION CABLE DUPLEX TO TUBE

ПАРАЛЛЕЛЬНЫЙ ЗАЖИМ ДЛЯ ПРИСОЕДИНЕНИЯ СДВОЕННОГО ПРОВОДА К ТРУБЕ

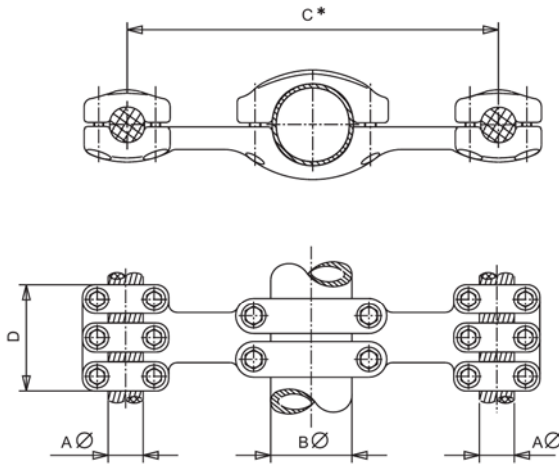


MUD3B3

Referencia Code Шифр	mm.				Par de apriete Tightening torque Момент затяжки (kg.m)	
	A \varnothing		B \varnothing	C	A	B
	Mín.	Máx.				
MUD3B3-30100	28	30	100	138	5	5
MUD3B3-32100	31	32	100	138	5	5
MUD3B3-35100	33	35	100	138	5	5
MUD3B3-38100	36	38	100	138	5	5
MUD3B3-43100	40	43	100	138	5	5
MUD3B3-22120	20	22	120	138	5	7
MUD3B3-25120	24	26	120	138	5	7
MUD3B3-30120	28	30	120	138	5	7
MUD3B3-32120	31	32	120	138	5	7
MUD3B3-35120	33	35	120	138	5	7
MUD3B3-38120	36	38	120	138	5	7
MUD3B3-43120	40	43	120	138	5	7
MUD3B3-30150	28	30	150	138	5	7
MUD3B3-32150	31	32	150	138	5	7
MUD3B3-35150	33	35	150	138	5	7
MUD3B3-38150	36	38	150	138	5	7
MUD3B3-43150	40	43	150	138	5	7

PARALLEL CONNECTOR UNION CABLE DUPLEX TO TUBE

ПАРАЛЛЕЛЬНЫЙ ЗАЖИМ ДЛЯ ПРИСОЕДИНЕНИЯ СДВОЕННОГО ПРОВОДА С ТРУБОЙ



MUD3B.*

NOTA

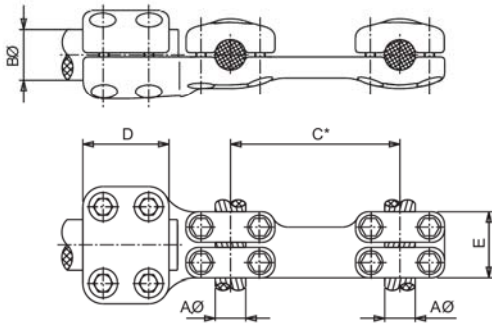
- C*
 - 4 = 400mm.
 - 45 = 450mm.

Referencia Code Шифр	mm.				Par de apriete Tightening torque Момент затяжки (kg.m)		
	A \varnothing		B \varnothing	C*	E	A	B
	Mín.	Máx.					
MUD3B.*-10030	28	30	100	SEGUN NOTA	138	5	5
MUD3B.*-10032	31	32	100		138	5	5
MUD3B.*-10035	33	35	100		138	5	5
MUD3B.*-10038	36	38	100		138	5	5
MUD3B.*-10043	40	43	100		138	5	5
MUD3B.*-12032	31	32	120		138	5	7
MUD3B.*-12035	33	35	120		138	5	7
MUD3B.*-12038	36	38	120		138	5	7
MUD3B.*-12043	40	43	120		138	5	7
MUD3B.*-15032	31	32	150		138	5	7
MUD3B.*-15035	33	35	150		138	5	7
MUD3B.*-15038	36	38	150		138	5	7
MUD3B.*-15043	40	43	150		138	5	7



PARALLEL CONNECTOR FOR CABLE DUPLEX TO STUD

ПАРАЛЛЕЛЬНЫЙ ЗАЖИМ ДЛЯ ПРИСОЕДИНЕНИЯ СДВОЕННОГО ПРОВОДА К ТРУБЕ



MDDBT.*

NOTA

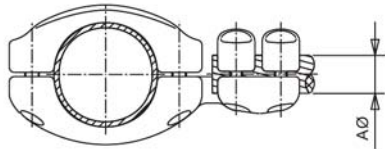
C*

- 1 = 100mm.
- 15 = 150mm.
- 2 = 200mm.
- 3 = 300mm.
- 33 = 330mm.
- 4 = 400mm.
- 45 = 450mm.

Referencia Code Шифр	mm.					Par de apriete Tightening torque Момент затяжки (kg.m)		
	Aø		Bø	C*	D	E	A	B
	Mín.	Máx.						
MDDBT.*-3030	28	30	30	SEGUN NOTA	85	90	5	5
MDDBT.*-3230	31	32	30		85	90	5	5
MDDBT.*-3530	33	35	30		85	90	5	5
MDDBT.*-3830	36	38	30		85	90	5	5
MDDBT.*-4330	40	43	30		85	90	5	5
MDDBT.*-3040	28	30	40		85	90	5	5
MDDBT.*-3240	31	32	40		85	90	5	5
MDDBT.*-3540	33	35	40		85	90	5	5
MDDBT.*-3840	36	38	40		85	90	5	5
MDDBT.*-4340	40	43	40		85	90	5	5
MDDBT.*-3050	28	30	50		100	90	5	5
MDDBT.*-3250	31	32	50		100	90	5	5
MDDBT.*-3550	33	35	50		100	90	5	5
MDDBT.*-3850	36	38	50		100	90	5	5
MDDBT.*-4350	40	43	50		100	90	5	5
MDDBT.*-3060	28	30	60		100	90	5	5
MDDBT.*-3260	31	32	60		100	90	5	5
MDDBT.*-3560	33	35	60		100	90	5	5
MDDBT.*-3860	36	38	60	100	90	5	5	
MDDBT.*-4360	40	43	60	100	90	5	5	

T CONNECTOR DOUBLE AL. CABLE TO TUBE

T-ОБРАЗНЫЙ ЗАЖИМ ДЛЯ ПРИСОЕДИНЕНИЯ ДВОЙНОГО АЛЮМИНЬЕВОГО ПРОВОДА К ТРУБЕ



MDTBD.*

NOTA

C*

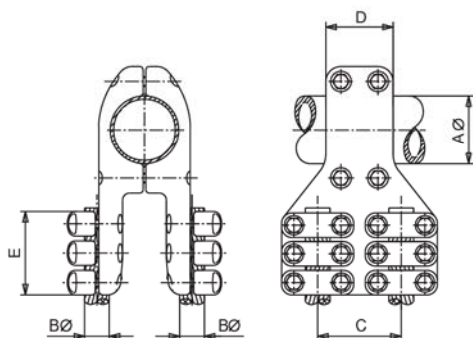
- 1 = 100mm.
- 15 = 150mm.
- 2 = 200mm.
- 3 = 300mm.
- 33 = 330mm.
- 4 = 400mm.
- 45 = 450mm.

Referencia Code Шифр	mm.				Par de apriete Tightening torque Момент затяжки (kg.m)		
	Aø		Bø	C*	D	A	B
	Mín.	Máx.					
MDTBD.*-30100	28	30	100	SEGUN NOTA	100	5	5
MDTBD.*-32100	31	32	100		100	5	5
MDTBD.*-35100	33	35	100		100	5	5
MDTBD.*-38100	36	38	100		100	5	5
MDTBD.*-43100	40	43	100		100	5	5
MDTBD.*-30120	28	30	120		110	5	5
MDTBD.*-32120	31	32	120		110	5	5
MDTBD.*-35120	33	35	120		110	5	5
MDTBD.*-38120	36	38	120		110	5	5
MDTBD.*-43120	40	43	120		110	5	5
MDTBD.*-30150	28	30	150		120	5	5
MDTBD.*-32150	31	32	150		120	5	5
MDTBD.*-35150	33	35	150		120	5	5
MDTBD.*-38150	36	38	150		120	5	5
MDTBD.*-43150	40	43	150		120	5	5



T CONNECTOR TUBE TO QUADRUPLÉ CABLE

Т-ОБРАЗНЫЙ ЗАЖИМ ДЛЯ ПРИСОЕДИНЕНИЯ ПРОВОДОВ К ТРУБЕ

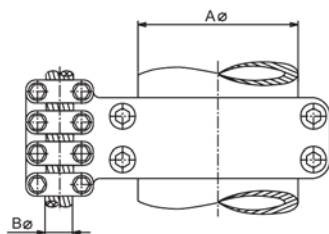
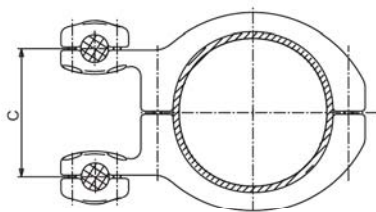


MTD2B3.1

Referencia Code Шифр	mm.					Par de apriete Tightening torque Момент затяжки (kg.m)	
	Aø	Bø	C	D	E	A	B
MTD2B3.1-10032	100	31-32	100	100	138	5	5
MTD2B3.1-10035	100	33-35	100	100	138	5	5
MTD2B3.1-10038	100	36-38	100	100	138	5	5
MTD2B3.1-10043	100	40-43	100	100	138	5	5
MTD2B3.1-15032	150	31-32	100	120	138	7	5
MTD2B3.1-15035	150	33-35	100	120	138	7	5
MTD2B3.1-15038	150	36-38	100	120	138	7	5
MTD2B3.1-15043	150	40-43	100	120	138	7	5

PARALLEL CONNECTOR FOR THROUGH TUBE TO DUPLEX CABLE

ПАРЛЕЛЬНЫЙ ЗАЖИМ ДЛЯ ПРИСОЕДИНЕНИЯ СДВОЕННОГО ПРОВОДА К ТРУБЕ



MUD4B.2

